



County of Santa Cruz

DEPARTMENT OF PUBLIC WORKS

701 OCEAN STREET, ROOM 410, SANTA CRUZ, CA 95060-4070
(831) 454-2160 FAX (831) 454-2385 TDD (831) 454-2123

THOMAS L. BOLICH
DIRECTOR OF PUBLIC WORKS

January 12, 2009

MR. ROGER BRIGGS
CALIFORNIA REGIONAL WATER
QUALITY CONTROL BOARD
895 Aerovista Place, Suite 101
San Luis Obispo, CA 93401-5415

SUBJECT: ROLLING WOODS WASTEWATER TREATMENT PLANT
COUNTY SERVICE AREA NO. 10, ANNUAL REPORT
FOR JANUARY THROUGH DECEMBER 2008

Dear Mr. Briggs:

Enclosed is the monitoring data for the reporting period of January through December 2008 for the Rolling Woods Wastewater Treatment Plant, County Service Area No. 10. There was one violation of the waste discharge requirements to report during this period. Please see attached explanation.

During the year, 1,180,607 gallons were treated at an average of 32,234 gallons per day. Plant effluent was disposed of in the permitted leach fields. Approximately 3,561 pounds of solids were hauled from the plant and disposed of at the County of Santa Cruz Transmission Line Facility at East Cliff.

If you have any questions, please call the undersigned at (831) 477-3907.

Yours truly,

THOMAS L. BOLICH
District Engineer

By:

Scott St. Denis
Treatment Plant Operations Supervisor

SS:rw
Attachment

rw_annual08.wpd

c) Reported Value(s) 37.0%

**d) WDR/NPDES
Limit/Condition:** 50%

e) Date of Violation(s)
(reference page of report/data sheet): May 26, 2008

f) Explanation of Cause(s): See attached sheet
(attach additional information as needed)

g) Corrective Action(s): See attached sheet
(attach additional information as needed)

In accordance with the Standard Provisions and Reporting Requirements, I certify under penalty of law that this document and all attachments were prepared under my direction or supervision following a system designed to assure that qualified personnel properly gather and evaluate the information submitted. Based on my knowledge of the person(s) who manage the system, or those directly responsible for data gathering, the information submitted is, to the best of my knowledge and belief, true, accurate, and complete. I am aware that there are significant penalties for submitting false information, including the possibility of fine and imprisonment

If you have any questions or require additional information, please contact me at the number provided above.

Sincerely,

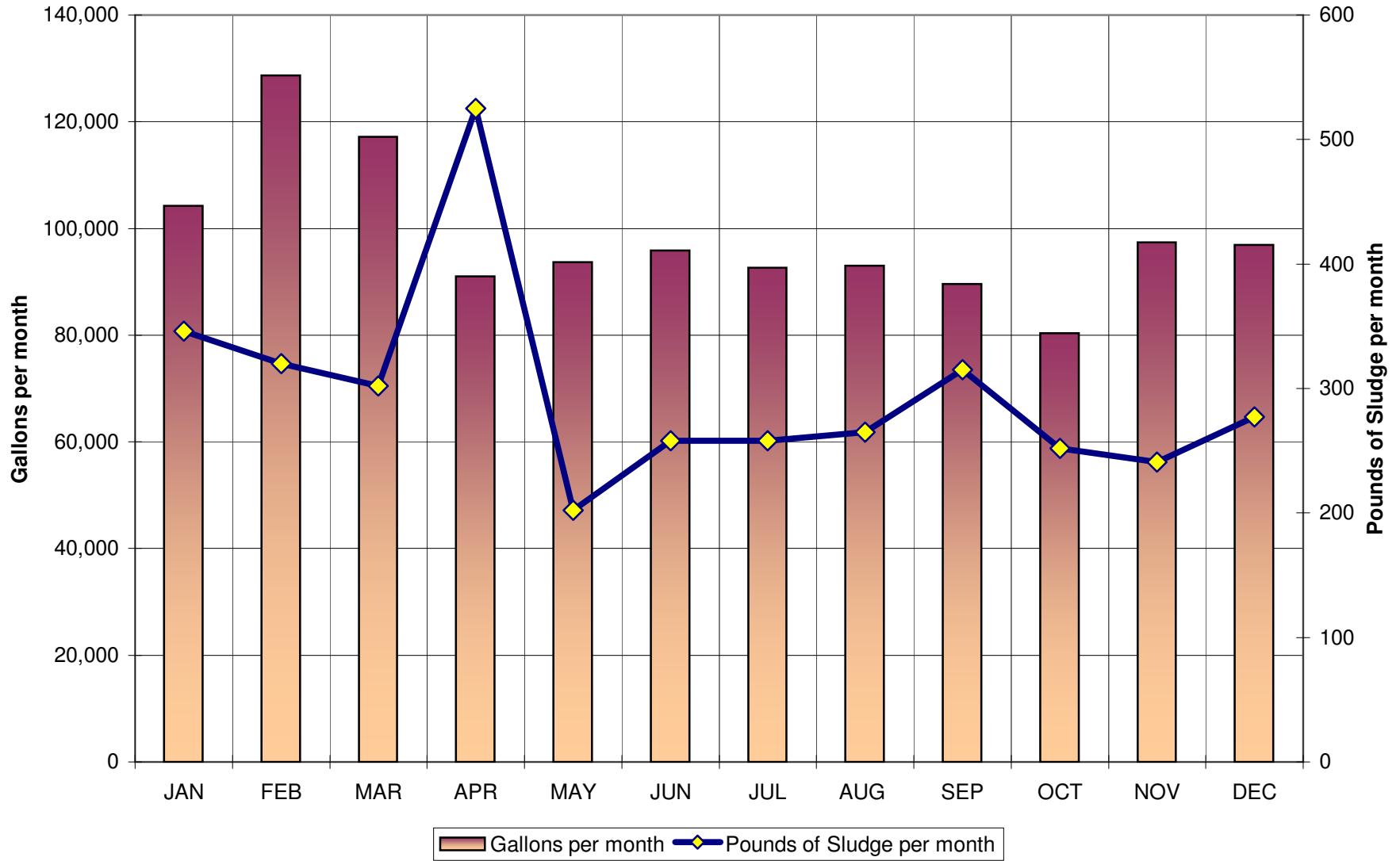


Name: Scott St. Denis
Title: Treatment Plant Operations Supervisor

ANNUAL REPORT FOR 2008

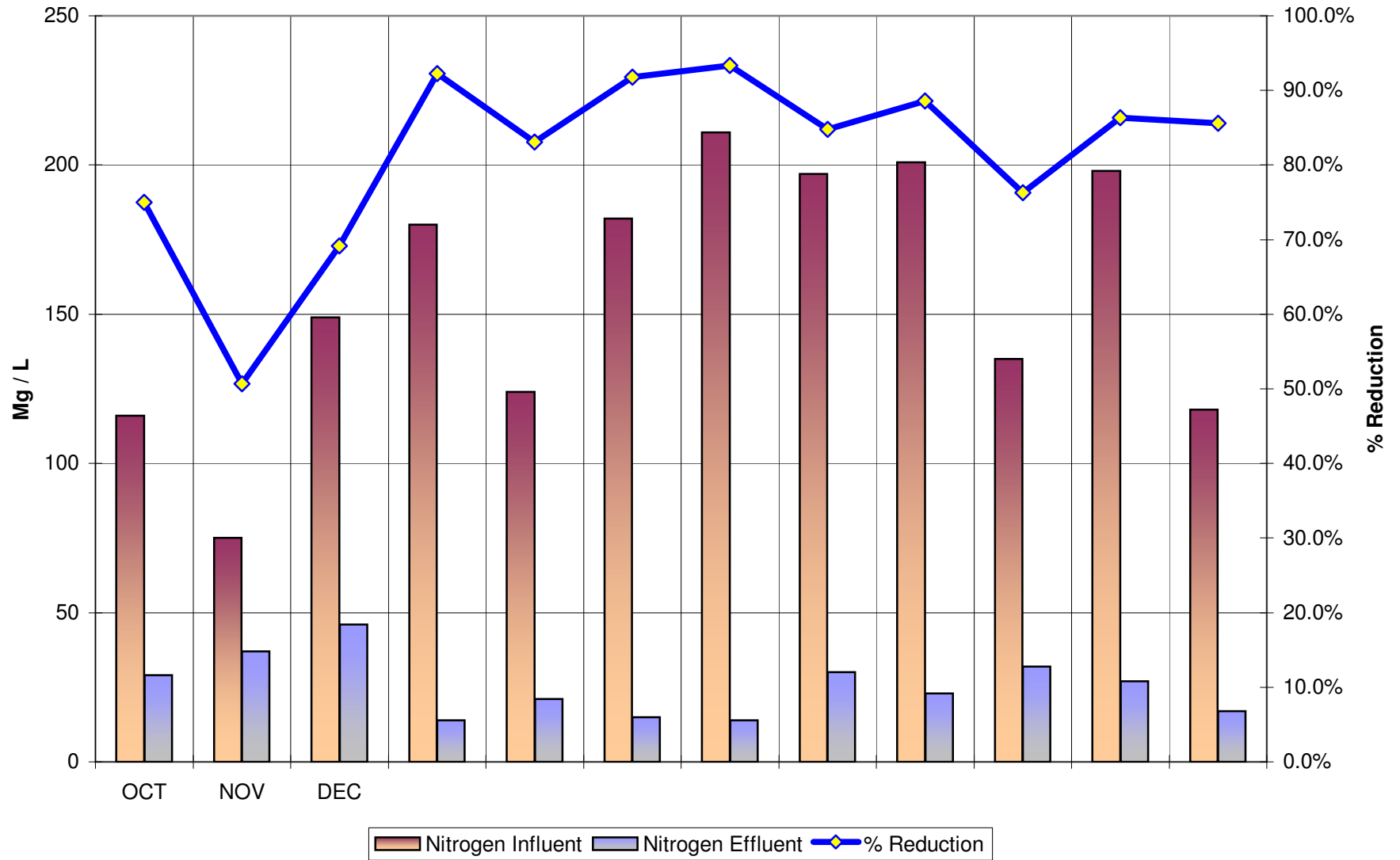
	JAN	FEB	MAR	APR	MAY	JUN	JUL	AUG	SEP	OCT	NOV	DEC	TOTAL
MONTHLY FLOW	104,200	128,700	117,200	91,000	93,700	95,900	92,597	93,000	89,610	80,400	97,400	96,900	1,180,607
LBS. OF SLUDGE	346	320	302	525	202	258	258	265	315	252	241	277	3,561
NITROGEN INFLUENT	116	75	149	180	124	182	211	197	201	135	198	118	1,886
NITROGEN EFFLUENT	29	37	46	14	21	15	14	30	23	32	27	17	305
% REDUCTION	75.0%	50.7%	69.1%	92.2%	83.1%	91.8%	93.4%	84.8%	88.6%	76.3%	86.4%	85.6%	83.8%

Flow vs. Sludge



REDUCTION GRAPH

Nitrogen Reduction



Explanation of Causes

Failure to achieve 50% nitrogen reduction on 2/26/08 was due to elevated ammonia in the effluent sample exacerbated by an unusually low influent nitrogen sample. Heavy rain preceding the 2/26/08 sample caused significant infiltration resulting in a diluted influent nitrogen sample.

Corrective Actions

Upon identifying ammonia in the effluent, we have set up a process to field test for ammonia at the treatment plant. We have run six consecutive violation free quarters with our current denitrification process. However, we have found that the low dissolved oxygen levels required for denitrification can sometimes lead to elevated ammonia in the effluent. We will continue to field test for nitrate and ammonia in the effluent to determine the proper dissolved oxygen levels to remove the ammonia and maintain low nitrate levels.